


Open Access Article

 <https://doi.org/10.55463/issn.1674-2974.50.2.17>

Physical Stability Profiling and Toxicity Index of Novel Integrated Organolopathic Dental Rinse Solution

Mariyah Yacoob¹, Saima Asif^{2*}, Aymen Owais², Hilal Shah³, Sidra Sohail², Sajida Khan², Tanveer Abbas^{1*}

¹ Department of Microbiology, University of Karachi, Karachi, Pakistan

² Department of Pharmacy, Jinnah University for Women, Karachi, Pakistan

³ Abdul Qadir Khan Institute of Biotechnology and Genetic Engineering, University of Karachi, Pakistan

* Corresponding authors: drsaima1981@gmail.com, taabbas@uok.edu.pk

Received: December 24, 2022 ▪ Review: January 22, 2023 ▪ Accepted: February 15, 2023 ▪ Published: February 27, 2023

Abstract: Oral washes for mouth and teeth are a sterile preparation process with anti-inflammatory properties against periodontal diseases. This research was planned to design mouthwash with an herbal-allopathic integrated formulation. Keeping one's teeth and mouth clean has been a common practice since ancient times and throughout all of human history. Mouthwash is a type of fluid that is considered a powerful and safe device that is used to flush the mouth to prevent dental caries, eliminate oral microorganisms, and act as an astringent. This also reduces the risk of life-threatening strains that arise from sewer water or food. The aim was to evaluate the novelty safety, efficacy, quality, toxicity, and side effects through pre-clinical trials on mice before commercialization. The toxicity indexes applied were physical behavior, hematology, and histopathology tests, performed against NMRI mice. No animals were found dead or in any serious abnormal condition, and normal development was observed, according to our interpretations. When compared to the control groups, it was discovered that body weight remained within normal ranges. The physical stability included monitoring of PH and density at room and accelerated temperatures for two years. The results showed that new developed oral solution met the standard criteria without causing any harmful side effects on weight, major organs, and blood patterns in mice. Acute toxicity revealed no mortality. Organolopathic (biosol) mouthwash formulations are one of the exceptionally compelling constituents for controlling the development of microorganisms and prevention of damaging health problems such as gingivitis, plaque and biofilm infections without causing any toxicity and maintaining the density and PH level.

Keywords: histology, periodontitis, stability, oral hygiene, hematology.

新型综合有机疗法牙科冲洗液的物理稳定性分析和毒性指数

摘要：用于口腔和牙齿的口腔清洗剂是一种无菌制备过程，具有抗牙周病的抗炎特性。这项研究计划具有草药对抗疗法综合配方的漱口水。自古以来保持牙齿和口腔清洁一直是人类的普遍做法，贯穿整个人类历史。漱口水是一种液体，被认为是一种功能强大且安全的装置，用于冲洗口腔以防止口腔发病、消除口腔微生物并起到收敛作用。这也降低了由下水道水或食物引起的危及生命的菌株的风险。目的是在商业化之前通过小鼠的临床前试验来评估

新颖性的安全性、有效性、质量、毒性和副作用。应用的毒性指标是针对新医学研究所小鼠进行的物理行为、血液学和组织病理学测试。根据我们的解释，没有发现动物死亡或处于任何严重异常状态，并且观察到正常发育。与对照组相比，发现体重保持在正常范围内。物理稳定性包括在室温和加速温度下监测氢的潜力值和密度两年。结果表明，新开发的口服溶液符合标准标准，不会对小鼠的体重、主要器官和血液模式造成任何有害的副作用。急性毒性显示没有死亡。有机疗法（生物溶胶）漱口水配方是控制微生物发展和预防有害健康问题（例如牙龈炎、牙菌斑和生物膜感染）而不会引起任何毒性并保持密度和PH水平的特别引人注目的成分之一。

关键词：组织学、牙周炎、稳定性、口腔卫生、血液学。

1. Introduction

The development of dental biofilm is one the main sources of the most prevalent oral contamination including dental caries, gum disease, and periodontal irritations [1, 2]. Dental plaque is portrayed by the development of complex biofilm on the teeth surface, including more than 500 bacterial species. These microorganisms are accounted to cause a few other congenital sicknesses in people [3, 4]. Supra-gingival plaque is normally forestalled by using different apparatuses including mechanical or electrical tooth brushing, dental floss, or interdental brushing [4]. Likewise, some different specialists engaged with plaque control are substance restorative specialists like splashes, biting gums, and oral mouthwash arrangements [5, 6]. The usage of mouthwash has been acknowledged as the basic, protected, and most effortless method of oral cleanliness help [7, 8]. Mouthwashes are considered the primary method of oral consideration in restoratively undermined and older patients where maintenance of sufficient oral cleanliness could be a significant test [8-10].

Oral and teeth cleanliness stayed a huge practice fora long time before and across different human advancements of the world [11, 12] The originally reported oral mouthwash arrangement was set up by a Greek doctor, Dioscorides, using milk, plant concentrate, oil, and additionally vinegar [13-15]. Mouthwash arrangements are specific fluid arrangements, considered intense and safe devices used to eliminate oral microorganisms, go about as an astringent, and forestall dental caries by flushing the mouth. This considers the danger of life-crippling strains rising out of fecal water and nourishment [16].

Chlorhexidine (CHX) has been considered as the best quality-level mouthwash in dental practice throughout the previous thirty years. Nonetheless, it has some observable disorders such as oral ulcerations, tooth staining, taste irritation, and one-sided or

reciprocal parotid growing [17-19]. The related results of synthetic medications can be very much overseen by using characteristic substances, such as natural concentrates, which are powerful, all-around endured, and financially savvy drugs with negligible results [20]. A rundown of different natural concentrates, i.e., clove oil, green tea, aloe vera, *Punicagranatum*, white oak bark, and spices such as neem, ajwain, turmeric, and tulsi have shown remedial and antibacterial impacts in the oral hole when used in mouthwash arrangements [21].

Intense harmfulness examines are led to work out the short unfavorable impacts of a flush wash once regulated in a solitary portion, or different dosages all through the measure of 24 h in 2class species (one nonrodent) [20].

The current investigation features the combination, appropriation, security profile, and in vivo harmfulness evaluation against created natural and allopathic of the newly formulated mouth wash [17].

2. Materials and Methods

2.1. Development of Biosol by Modified and Novel Herbal-Allopathic Formulation

Herbal-allopathic combo (combine) formulation has been developed with novel preservatives, chlorhexidinegluconate active allopathic substances, modified essential oils, and novel essential oil including sweet basil oil [9]. The combination of herbal oils and allopathic ingredients will work together against a virulent strain contamination that can damage oral health and hygiene [14].

2.2. Selection of Oral Herbal-Allopathic Ingredients for Biosol Preparation

The herbal and allopathic active ingredients merged with an emulsifier, preservatives, humectant, sweetener, anti-tarter agent, foaming agent, water,

color, and flavor added to increase their antimicrobial efficacy.

2.3. Density and PH Profiling for Stability Studies in Biosol

The stability profile of the herbal mouthwash was evaluated using different parameters. The pH of the oral samples was determined using a standard glass electrode, while the density was determined using water as standard [18-20]. Two-year shelf life of the product was checked at a room temperature of 30°C and a temperature of 40°C [20-21].

2.4. Animal Ethics

NMRI (Novel Medical Research Institute) mice were bought from the International Center for Chemical and Biological Sciences (ICCBS). This movement has been inspected and endorsed by the Institutional Bioethics Committee IBC Certification (IBC KU-167/2021) as per the rules given by the Helsinki announcement and guides for the consideration and usage of lab animals, the National Academy of Science, National Academy Press, and Washington, DC.

2.5. Acute Oral Poisonousness Examination

NMRI mice (n = 10/males/females 5 each) two months old enough were taken from the animal house office of Herbion, Karachi, Pakistan. Male and female mice were kept under standard ecological conditions, i.e., 25 ± 1°C, relative dampness 52-61%, and 12 h in dim/light cycle.

2.6. Test Item Dosing and Perceptions

Mice weights were taken after and in started to adjust the period between 25-35 g. The cut-off test was performed on a single high portion of 1000 mg/kg and 5000 mg/kg (5 ml) for 0-14 days orally to the treatment bunches for every item. Drinking water and food were given not in-dispensable all through the examination, besides a short fasting period for food 12 hours preceding treatment [15]. The mice were firmly checked initially before 30 min and afterward for 4 hours while the food was given after 1-2 hours of dosing. The variation has been noticed in mice behavior and its impacts were distinctly seen at the time frame till the finish of the study period. Mice weights were observed and reported from day 1, day 7, and day 14. The same volume of refined water was given to a group of 5 males and 5 female mice as a control bunch for relative examinations and was gathered and observed [18].

2.7. Physiological (Organ) Evaluation

Fundamental organs were extracted subsequently to slaughter mice by cervical removal. The weight of the organs was noted and saved in 10% formalin and

implanted in paraffin wax. Paraffin segments were made at 5 mm and stained with hematoxylin and eosin. The slides were concentrated under a light magnifying lens for perception [20].

2.8. Cytological Investigation

Blood tests were performed via cardiovascular cut under sedation with isoflurane, and serum from blood was separated for biochemical and hematological assessments. Mice blood tests (both treated and control gatherings) were gathered in enemy of coagulant tubes for hematological examination, and various tests have been performed [21].

2.9. Statistical Analysis

Mean ± SEM and importance information ($P < 0.05$) between the gatherings per test was determined by SPSS 20.0 programming. Statistical analysis was performed using a t-test (p-value) using SPSS 20.0 software to test each pair. Sample means were determined, and the p-value was observed to be significant to be less than 0.05 [8].

3. Results

3.1. Density and PH Profiling for Stability Studies in Biosol

The physical properties of biosol were performed from the mentioned times when oral wash were created and tried with different time in 0 days, 90 days, 180 days, 270 days, 365 days, and 730 days at 30°C and 40°C ± 2 and affirmed the dependability of the item kept going till 2 years. P^H and density profile are shown in Figures 1 and 2. Temperature is contrarily corresponding to thickness and pH. All mouth washes were discovered to be acceptable regarding actual boundaries when contrasted and worldwide guidelines [19].

Biosol have been identified for the evaluation of stability data. These batches have different formulations and all three batches are packed in a commercial pack. Stability performed at 40°C ± 2°C RH = 75% & 30°C ± 2, RH 65% ± 5 at different intervals. Batches were tested according to the approved test method [20]. The results conclude that this product is physically stable throughout its shelf life. Other tests also comply with specifications [19-21]. In this study, the results concluded that the composition and concentration of different chemicals along with other ingredients in biosol (herbal-allopathic) combination were good enough to control periodontitis, plaque, peri-implants diseases, and oral infections compared to the rest of the frequently used mouthwashes [18-19].

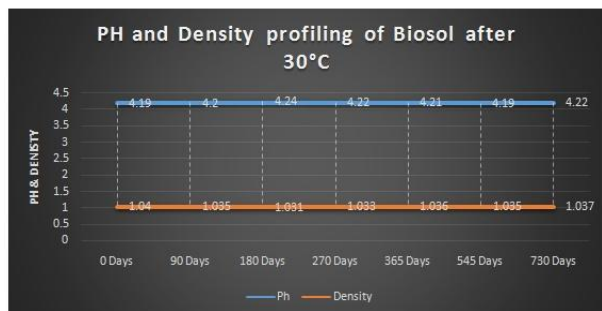


Fig. 1 PH and density stability profiling of biosol oral wash at 30°C

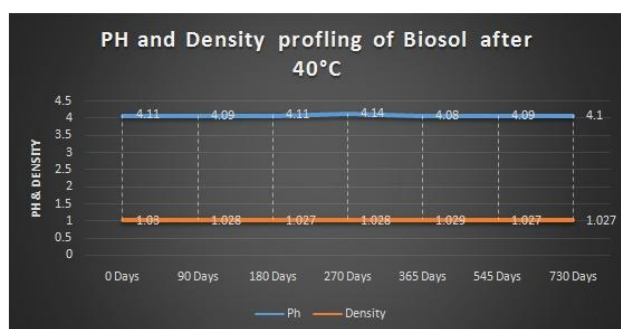


Fig. 2 PH and density stability profiling of biosol oral wash at 40°C

Table 1 Body weight comparison before and after the use of biosolin in mice

Groups	Body weight (gm)	1 st Day	7 th Day	14 th Day
	Route of administration (5000 mg/kg)			
Control group	Distilled water (Oral administration)	28.31 ± 0.380	29.15 ± 0.269	29.89 ± 0.513
Treated group	Biosol (Oral administration)	28.77 ± 0.621	29.06 ± 0.223	30.11 ± 0.566

* Values are presented as mean ± SEM; N = 5 (N represents 10 mice used; 5 males and 5 females)

Table 2 Tested mice's body organs

Organs	Acute toxicity group
	Vehicle control group (5000 mg/kg)
	Distilled water
Heart	Biosol
Kidney	0.835 ± 0.042
Liver	0.869 ± 0.081
	1.323 ± 0.031
	7.692 ± 0.159
	9.424 ± 0.164

* Values are presented as mean ± SEM, N = 10 (N represents 5 mice used, 5 males and 5 females); organ-to-body weight index = (organ weight × 100)/body weight

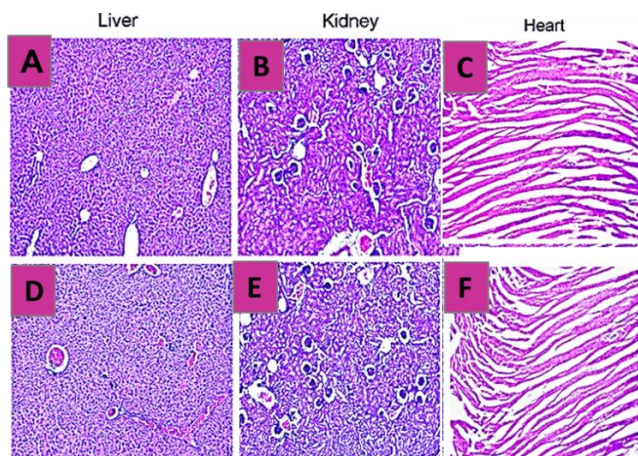


Fig. 3 The physiological pattern and (A) liver, (B) kidney (C) heart in control mice; C-D and E - after biomol dosing in mice

3.2. The Acute Oral Poisonousness Examination

The standard behavior of mice were analyzed initially after 30 min of treatments and followed for 14 days at different time intervals to investigate whether the biosol has some worst effects on body weight. After proper observations, groups of control mice to whom distilled water was given and a treated group to whom biosol dental solution was given. The observed data are highlighted in Table 1, which shows no significant difference.

3.3. Physiological Evaluations

Crucial organs including the heart, kidney, and liver, were taken apart and analyzed by NMRI (Novel Medical Research Institute). The tested mice's body organs were examined and summed up in Table 2. In the control groups, only distilled water was given, while in treated or tested groups biosols were given. The microscopy data of organs also suggested that there are no lesions or injuries in mice in both controls and, biosol treated mice, as presented in Fig. 3.

3.4. Haematological Interpretation

The blood profile comparison of both control and treated mice showed that no rise in blood parameters. All blood parameters were also found in satisfactory ranges. The data of the blood profile of both the control and tested mice are shown with their respective reference value as shown in Table 3.

Table 3 CBC evaluation dosing 5000 mg/kg of biosol in mice

Parameters	Control group	Acute toxicity group	Reference range & Unit
	Distilled water	Biosol	
Hemoglobin (Hb)	14.5 ± 0.129	15.7 ± 0.103	13.0-16.5 g/dl
Total erythrocyte count (RBC)	7.68 ± 0.024	8.76 ± 0.157	7.8-10.6 million/ul
Hematocrit (HCT/PCV)	42 ± 0.065	43 ± 1.674	33-50 %
MCV	51 ± 0.019	54 ± 0.237	40-55 fl
MCH	15 ± 0.022	16 ± 0.024	13.0-19.0 pg
MCHC	34 ± 0.292	31 ± 0.276	30-38 g/dl
Total leucocyte count (WBC)	5.0 × 10 ⁹	5.2 × 10 ⁹	2.0-10.0 × 10 ⁹ /l
Platelet count	422 × 10 ⁹	516 × 10 ⁹	300-750 × 10 ⁹ /l

* Values are presented as mean ± SEM, N = 5 (N represents 5 mice used, 2 males & 3 females); * P < 0.05 compared with the vehicle control group. There is no significant difference in hemoglobin or Total RBC observed by giving their range.

4. Conclusion

Clinical trials are an important tool to ensure any worst toxicological impacts that can be lethal or at least

lead to unfavorable responses after the usage of newly developed mouthwashes. The current investigation was appropriately based to ascertain the intense poisonousness of biosolin NMRI mice by OECD rules [20]. The quality, safety, movement, and viability are earlier investigations to get to the more secure suggested measurement structure before advertising. Mice models were fundamentally noticed all through this examination for signs and indications that showed up after being treated with advanced combined novel formulations [16].

The primary plan to recognize that the creating items such as biosols will be useful to acquire dental diseases and actually take a look at in vivo earlier going through creature studies.

The findings demonstrated that the newly developed oral solution met the standard requirements without adversely affecting the weight, major organs, or blood patterns of mice. There was no mortality from acute toxicity. One of the most important ingredients in organolopathic (biosol) mouthwash formulations is one that can control the growth of microorganisms and prevent harmful health conditions such as gingivitis, plaque, and biofilm infections without being toxic or changing the density or PH level.

All parameters have been concentrated with a positive interpretation that including conduct changes, modification in body weight, histological loads incorporating liver, heart, and kidney, and in particular hematological boundaries for significant body cell limits consented or not [4, 5]. Diverse fundamental oils and actives extricated from plant sources are being used for some irresistible infections. In the current examination, new actives with revised formulations have been used for dental answers for giving medical advantages and keeping from mouth issues such as torment, draining, and expanding and major microbial infections such as *Veillonellaparvula* (ATCC-10790), *Porhryomonasgingivalis* (ATCC-33277), *Escherichia coli* (ATCC-8739), *Escherichia coli* (ATCC-14169), *Salmonella typhi* (ATCC-14028), *Salmonella enterica* (ATCC-6017), *Pseudomonas aeruginosa* (ATCC-9027), *Bacillus spizizenii* (ATCC-6633), *Staphylococcus aureus* (ATCC-6538), *Candida albicans* (ATCC-10231), and *Aspergillusbraziliensis* (ATCC-16404).

According to our interpretations, no animals were found dead or in any serious abnormalconditiona and normal developmentwas noticed. Body weight was discovered to be in the normal range compared to controlgroups. Any sporadic clear changes were not noticed like deviation in routine water and food utilizations. No significant changes were seen in fundamental body organs such as sizes, tinge, and injuries [5-8]. Hematological boundaries were additionally found in good range. The body cell evaluation decided after blood test assortment is the

most basic qualities. Furthermore, prime specialized applications in physiology to confirm semi-manufactured or bio-formulated items clinically in tested models. The current investigation of intense in vivo poisonous viability examination on the newly formulated dental solution is valuable to suggest for dental security and preventing teeth from tooth decay and plaque diseases [20].

In the end, mouthwash use has been seen as the most important, easy, and effective method for maintaining oral hygiene [5, 7]. In medically sabotaged and more prepared patients, where maintaining adequate oral hygiene can be a monumental challenge, mouthwashes are regarded as the fundamental method for oral ideas [3, 4, 15].

Superfluous cleaning of the mouth with the dental course of action may agitate normal green and staining of teeth. Mouth ulcers may similarly be possible because of different uses. It is endorsed to consume once or twice each day morning and night independently only for better and amazing outcomes [4, 13, 17].

The data suggested that biosol that is created by combining organic oils and allopathic actives is alright for rinsing without bringing on any significant results and harmfulness. The preliminary stability studies are co-related and supported according to the period of usability examined [4, 20].

The study's limitations include the inability to check the color of the teeth after continuous use; if there is any discoloration, consult a doctor before use [13].

Antimicrobial adequacy tests will likewise be performed against biofilm, plaque, tartar, and gingival issues. Chromatographic examinations were not conducted in this exploration. Subsequently, fundamental oils and allopathic actives measurement that is compulsory to contrast and mark guarantee ought to be tried by compound progressed chromatographic methods.

References

- [1] AKANDE O., ALADA A., ADERINOKUN G., and IGE A. Efficacy of different brands of mouth rinses on oral bacterial load count in healthy adults. *African Journal of Biomedical Research*, 2004, 7(3): 125-128. <https://doi.org/10.4314/ajbr.v7i3.54160>
- [2] ANDREADIS G., TOPITSOLOU V., and KALFAS S. Acidogenicity and acidurance of dental plaque and saliva sediment from adults in relation to caries activity and chlorhexidine exposure. *Journal of Oral Microbiology*, 2015, 7(1): 26197. <https://doi.org/10.3402/jom.v7.26197>
- [3] DEGHANI M., ABTAHI M., SADEGHIAN H., and SHAFEE H., TANBAKUCHI B. Combined chlorhexidine-sodiumfluoride mouthrinse for orthodontic patients: Clinical and microbiological study. *Journal of Clinical and Experimental Dentistry*, 2015, 7(5): e569-e575. <https://doi.org/10.4317%2Fjced.51979>
- [4] DESCHEPPER M., WAEGEMAN W., EECKLOO K., VOGELAERS D., and BLOT S. Effects of chlorhexidine

- gluconate oral care on hospital mortality: a hospital-wide, observational cohort study. *Intensive Care Medicine*, 2018, 44(7): 1017-1026. <https://doi.org/10.1007/s00134-018-5171-3>
- [5] FRISCH E., VACH K., and RATKA-KRUEGER P. Impact of supportive implant therapy on peri-implant diseases: A retrospective 7-year study. *Journal of Clinical Periodontology*, 2020, 47(1): 101-109. <https://doi.org/10.1111/jcpe.13206>
- [6] GHAPANCHI J., MOATTARI A., LAVAE F., and SHAKIB M. The antibacterial effect of four mouthwashes against *Streptococcus mutans* and *Escherichia coli*. *The Journal of the Pakistan Medical Association*, 2015, 65(4): 350-353. [HTTPS://PUBMED.NCBI.NLM.NIH.GOV/25976564/](https://pubmed.ncbi.nlm.nih.gov/25976564/)
- [7] JAMES P., WORTHINGTON H.V., PARNELL C., HARDING M., LAMONT T., CHEUNG A., WHELTON H., and RILEY P. Chlorhexidine mouthrinse as an adjunctive treatment for gingival health. *Cochrane Database of Systematic Reviews*, 2017, 3(3): CD008676. <https://doi.org/10.1002/14651858.cd008676.pub2>
- [8] JONES C.G. Chlorhexidine: is it still the gold standard? *Periodontology* 2000, 1997, 15: 55-62. <https://doi.org/10.1111/j.1600-0757.1997.tb00105.x>
- [9] MASADEH M.M., GHARAIBEH S.F., ALZOUBI K.H., AL-AZZAM S.I., and OBEIDAT W.M. Antimicrobial activity of common mouthwash solutions on multidrug-resistance bacterial biofilms. *Journal of Clinical Medicine Research*, 2013, 5(5): 389-394. <https://doi.org/10.4021/jocmr1535w>
- [10] NCUBE N., AFOLAYAN A., and OKOH A. Assessment techniques of antimicrobial properties of natural compounds of plant origin: current methods and future trends. *African Journal of Biotechnology*, 2008, 7(12): 1797-1806. <https://doi.org/10.5897/AJB07.613>
- [11] PEREIRA E.M.R., DA SILVA J.L.D.C., SILVA F.F., DE LUCA M.P., LORENTZ T.C.M., and SANTOS, V.R. Clinical evidence of the efficacy of a mouthwash containing propolis for the control of plaque and gingivitis: a phase II study. *Evidence-Based Complementary and Alternative Medicine*, 2011, 2011: 750249. <https://doi.org/10.1155/2011/750249>
- [12] PRASANTH M. Antimicrobial efficacy of different toothpastes and mouthrinses: an in vitro study. *Dental Research Journal*, 2011, 8(2): 85-94. <https://www.ncbi.nlm.nih.gov/pmc/articles/PMC3177399/>
- [13] RENUKA S., & MURALIDHARAN N.P. Comparison in benefits of herbal mouthwashes with chlorhexidine mouthwash: A review. *Asian Journal of Pharmaceutical and Clinical Research*, 2017, 10(2): 3-7. <https://doi.org/10.22159/ajpcr.2017.v10i2.13304>
- [14] ROSIER B., MARSH P., and MIRA A. Resilience of the oral microbiota in health: mechanisms that prevent dysbiosis. *Journal of Dental Research*, 2018, 97(4): 371-380. <https://doi.org/10.1177/0022034517742139>
- [15] SANZ M., BEIGHTON D., CURTIS M. A., CURY J. A., DIGE I., DOMMISCH H., ELLWOOD R., GIACAMAN R. A., HERRERA D., HERZBERG M. C., KÖNÖNEN E., MARSH P. D., MEYLE J., MIRA A., MOLINA A., MOMBELLI A., QUIRYNEN M., REYNOLDS E. C., SHAPIRA L., and ZAURA E. Role of microbial biofilms in the maintenance of oral health and in the development of dental caries and periodontal diseases. Consensus report of group 1 of the Joint EFP/ORCA workshop on the boundaries between caries and periodontal disease. *Journal of Clinical Periodontology*, 2017, 44: S5-S11. <https://doi.org/10.1111/jcpe.12682>
- [16] SEETHALAKSHMI C., REDDY R. J., ASIFA N., and PRABHU S. Correlation of salivary pH, incidence of dental caries and periodontal status in diabetes mellitus patients: a cross-sectional study. *Journal of Clinical and Diagnostic Research*, 2016, 10(3): ZC12-ZC14. <https://doi.org/10.7860/2FJCDR%2F2016%2F16310.7351>
- [17] SUNDQVIST M. L., LUNDBERG J. O., and WEITZBERG E. Effects of antiseptic mouthwash on resting metabolic rate: a randomized, double-blind, crossover study. *Nitric Oxide*, 2016, 61: 38-44. <https://doi.org/10.1016/j.niox.2016.10.003>
- [18] TRIBBLE, G.D., ANGELOV, N., WELTMAN, R., WANG, B.-Y., ESWARAN, S.V., GAY, I.C., PARTHASARATHY K., DAO D.-H. V., RICHARDSON K. N., ISMAIL N. M., SHARINA I. G., HYDE E. R., AJAMI N. J., PETROSINO J. F., and BRYAN N. S. Frequency of tongue cleaning impacts the human tongue microbiome composition and enterosalivary circulation of nitrate. *Frontiers in Cellular and Infection Microbiology*, 2019, 9: 39. <https://doi.org/10.3389/fcimb.2019.00039>
- [19] VAN GASTEL J., QUIRYNEN M., TEUGHELIS W., and CARELS C. The relationships between malocclusion, fixed orthodontic appliances and periodontal disease. A review of the literature. *Australian Orthodontic Journal*, 2007, 23(2): 121-129. <https://pubmed.ncbi.nlm.nih.gov/18200790/>
- [20] VIJAYAALAKSHMI L., & GEETHA R. Comparison of Herbal Mouth Wash with Conventional Mouth Wash in Use in Reducing *Streptococcus Mutans*-An Invitro Study. *Journal of Pharmaceutical Sciences and Research*, 2015, 7(7): 485-486. <https://www.jpsr.pharmainfo.in/Documents/Volumes/vol7Issue07/jpsr07071527.pdf>
- [21] YOUSEFIMANESH H., AMIN M., ROBATI M., GOODARZI H., and OTOUFI M. Comparison of the antibacterial properties of three mouthwashes containing chlorhexidine against oral microbial plaques: An in vitro study. *Jundishapur Journal of Microbiology*, 2015, 8(2): e17341. <https://doi.org/10.5812/jjm.17341>

参考文献:

- [1] AKANDE O., ALADA A., ADERINOKUN G., 和 IGE A. 不同品牌漱口水对健康成人口腔细菌载量的影响. 非洲生物医学研究杂志, 2004年, 7(3): 第 125-128 页. <https://doi.org/10.4314/ajbr.v7i3.54160>
- [2] ANDREADIS G., TOPITSOLOU V., 和 KALFAS S. 成人牙菌斑和唾液沉积物的酸原性和耐酸性与龋齿活动和洗必泰暴露有关. 口腔微生物学杂志, 2015, 7(1): 文章 26197. <https://doi.org/10.3402/jom.v7.26197>
- [3] DEGHANI M., ABTAHI M., SADEGHIAN H., 和 SHAFARAE H., TANBAKUCHI B. 用于正畸患者的联合洗必泰-氟化钠漱口水: 临床和微生物学研究. 临床和实验牙科杂志, 2015年, 7(5): 第e569-e575页. <https://doi.org/10.4317%2Fjced.51979>

- [4] DESCHEPPER M., WAEGEMAN W., EECKLOO K., VOGELAERS D., 和 BLOT S. 葡萄糖酸氯己定口腔护理对医院死亡率的影响：一项全院观察性队列研究。重症监护医学, 2018, 44(7): 第 1017-1026页. <https://doi.org/10.1007/s00134-018-5171-3>
- [5] FRISCH E., VACH K., and RATKA-KRUEGER P. 支持性种植治疗对种植体周围疾病的影响：一项为期 7 年的回顾性研究。临床牙周病学杂志, 2020, 47(1): 第101-109页. <https://doi.org/10.1111/jcpe.13206>
- [6] GHAPANCHI J., MOATTARI A., LAVAE F., 和 SHAKIB M. 四种漱口水对变形链球菌和大肠杆菌的抗菌作用。巴基斯坦医学杂志, 2015年, 65(4): 第 350-353 页. <https://pubmed.ncbi.nlm.nih.gov/25976564/>
- [7] JAMES P., WORTHINGTON H.V., PARNELL C., HARDING M., LAMONT T., CHEUNG A., WHELTON H., 和 RILEY P. 洗必泰漱口水作为牙龈健康的辅助治疗。科克伦系统评价数据库, 2017年, 3(3): 文章光盘008676. <https://doi.org/10.1002/14651858.cd008676.pub2>
- [8] JONES C.G. 洗必太：它仍然是金标准吗？牙周病学 2000, 1997, 15: 第55-62页. <https://doi.org/10.1111/j.1600-0757.1997.tb00105.x>
- [9] MASADEH M.M., GHARAIBEH S.F., ALZOUBI K.H., AL-AZZAM S.I., 和 OBEIDAT W.M. 常见漱口水溶液对多重耐药细菌生物膜的抗菌活性。临床医学研究杂志, 2013, 5(5): 第389-394页. <https://doi.org/10.4021/jocmr1535w>
- [10] NCUBE N., AFOLAYAN A., 和 OKOH A. 植物来源天然化合物抗菌特性的评估技术：当前方法和未来趋势。非洲生物技术杂志, 2008, 7(12): 第1797-1806页. <https://doi.org/10.5897/AJB07.613>
- [11] PEREIRA E.M.R., DA SILVA J.L.D.C., SILVA F.F., DE LUCA M.P., LORENTZ T.C.M., 和 SANTOS, V.R. 含蜂胶漱口水控制牙菌斑和牙龈炎功效的临床证据：一项 II 期研究。循证补充和替代医学, 2011, 2011: 750249. <https://doi.org/10.1155/2011/750249>
- [12] PRASANTH M. 不同牙膏和漱口水的抗菌功效：一项体外研究。牙科研究杂志, 2011, 8(2): 第85-94页. <https://www.ncbi.nlm.nih.gov/pmc/articles/PMC3177399/>
- [13] RENUKA S., 和 MURALIDHARAN N.P. 草药漱口水与洗必泰漱口水的益处比较：综述。亚洲制药与临床研究杂志, 2017, 10(2): 第3-7页. <https://doi.org/10.22159/ajpcr.2017.v10i2.13304>
- [14] ROSIER B., MARSH P., 和 MIRA A. 口腔微生物群在健康中的恢复力：防止生态失调的机制。牙科研究杂志, 2018, 97(4): 第371-380页. <https://doi.org/10.1177/0022034517742139>
- [15] SANZ M., BEIGHTON D., CURTIS M. A., CURY J. A., DIGE I., DOMMISCH H., ELLWOOD R., GIACAMAN R. A., HERRERA D., HERZBERG M. C., KÖNÖNEN E., MARSH P. D., MEYLE J., MIRA A., MOLINA A., MOMBELLI A., QUIRYNEN M., REYNOLDS E. C., SHAPIRA L., 和 ZAURA E. 发微生物生物膜在维持口腔健康以及龋齿和牙周病发展中的作用。欧洲牙周病学联合会/欧洲
牙齿研究联合会第1组(与欧洲)关于牙齿和牙周病之间界限的共识报告。临床牙周病学杂志, 2017, 44: 第S5-S11页. <https://doi.org/10.1111/jcpe.12682>
- [16] SEETHALAKSHMI C., REDDY R. J., ASIFA N., 和 PRABHU S. 糖尿病患者唾液氢的重量值、龋齿发病率和牙周状况的相关性：一项横断面研究。临床和诊断研究杂志, 2016, 10(3): 第零碳12-零碳14页. <https://doi.org/10.7860%2FJCDR%2F2016%2F16310.7351>
- [17] SUNDQVIST M. L., LUNDBERG J. O., 和 WEITZBERG E. 抗菌漱口水对静息代谢率的影响：一项随机、双盲、交叉研究。一氧化氮, 2016, 61: 第38-44页. <https://doi.org/10.1016/j.niox.2016.10.003>
- [18] TRIBBLE, G.D., ANGELOV, N., WELTMAN, R., WANG, B.-Y., ESWARAN, S.V., GAY, I.C., PARTHASARATHY K., DAO D.-H. V., RICHARDSON K. N., ISMAIL N. M., SHARINA I. G., HYDE E. R., AJAMI N. J., PETROSINO J. F., 和 BRYAN N. S. 清洁舌头的频率会影响人体舌头微生物组成和硝酸盐的肠唾液循环。细胞和感染微生物学前沿, 2019, 9: 39. <https://doi.org/10.3389/fcimb.2019.00039>
- [19] VAN GASTEL J., QUIRYNEN M., TEUGHELIS W., 和 CARELS C. 咬合不正、固定矫治器与牙周病的关系。文献综述。澳大利亚正畸杂志, 2007, 23(2): 第121-129页. <https://pubmed.ncbi.nlm.nih.gov/18200790/>
- [20] VIJAYAALAKSHMI L., 和 GEETHA R. 草药漱口水与传统漱口水在减少变异链球菌方面的比较——一项体外研究。药物科学与研究杂志, 2015, 7(7): 485-486. <https://www.jpsr.pharmainfo.in/Documents/Volumes/vol7Issue07/jpsr07071527.pdf>
- [21] YOUSEFIMANESH H., AMIN M., ROBATI M., GOODARZI H., 和 OTOUFI M. 三种含有洗必泰的漱口水对口腔微生物菌斑的抗菌性能比较：一项体外研究。君迪沙布尔微生物学杂志, 2015, 8(2): e17341. <https://doi.org/10.5812/jjm.17341>