

Open Access Article

Transplantation of *Acropora* in Different Depth: First Report on an Effort for Environmental Sustainability in Gili Ketapang, Probolinggo

Andys Dwianinda Rosaline¹, Mochamad Faisal Trisatrio¹, Muhammad Browijoyo Santanumurti², Fitri Budiyanto^{3,4}, Boedi Setya Rahardja², Putri Desi Wulan Sari^{2,*}

¹ Aquaculture Program, Faculty of Fisheries and Marine, Universitas Airlangga, Surabaya, Indonesia

² Department of Aquaculture, Faculty of Fisheries and Marine, Universitas Airlangga, Surabaya, Indonesia

³ Research Center for Oceanography, Indonesian Institute of Sciences, Jakarta, Indonesia

⁴ Marine Chemistry, King Abdulaziz University, Jeddah, Kingdom of Saudi Arabia

Abstract: The *Acropora* commodity in Gili Ketapang, Probolinggo, is massively deteriorated; thus, a transplantation program for environmental sustainability is commenced. This study is aimed to determine the effect of depth on the *Acropora* transplantation activity as a reference of the *Acropora* rehabilitation program in the Gili Ketapang, Probolinggo. The result showed that transplanted *Acropora* at 5 m and 10 m depths showed different survival rates. The highest survival rate at a depth of 5 m was 94%, while the lowest was 84% at 10 m in depth. Their bright and diverse colors characterized the live corals in this study; meanwhile, the dead corals were pale white and fragile. The average density of zooxanthellae cells at a depth of 5 meters was 4.79×10^6 cells/cm² and at a depth of 10 meters was 2.75×10^6 cells/cm². Uniquely, the level of nitrate and phosphate did not comply with the quality standards. Thus, we recommend that transplantation activity of *Acropora* in Gili Ketapang, Probolinggo, was performed at a depth of 5 m for optimal results.

Keywords: *Acropora*, transplantation, environmental education, depth, marine conservation.

不同深度的鹿角移植：关于在探戈的吉利吉打邦努力实现环境可持续性的第一份报告

摘要：位于探戈的吉利吉打邦的鹿角商品严重恶化；因此，启动了环境可持续性移植计划。本研究旨在确定深度对鹿角移植活动的影响，作为探戈的吉利吉打邦的鹿角康复计划的参考。结果表明，移植后5米和10米深度的鹿角珊瑚存活率不同。5米深度的最高成活率为94%，而10米深度的最低成活率为84%。它们鲜艳多样的颜色是本研究中活珊瑚的特征。与此同时，死去的珊瑚呈淡白色且脆弱。5米深处的虫黄藻细胞平均密度为 4.79×10^6 个细胞/平方厘米，10米深度处的平均密度为 2.75×10^6 个细胞/平方厘米。独特的是，硝酸盐和磷酸盐的水平不符合质量标准。因此，我们建议在探戈的吉利吉打邦进行鹿角的移植活动，在5米深度的深度进行以获得最佳结果。

关键词：鹿角、移植、环境教育、深度、海洋保护。

Received: March 7, 2021 / Revised: April 9, 2021 / Accepted: May 11, 2021 / Published: June 28, 2021

About the authors: Andys Dwianinda Rosaline, Mochamad Faisal Trisatrio, Aquaculture Program, Faculty of Fisheries and Marine, Universitas Airlangga, Surabaya, Indonesia; Muhammad Browijoyo Santanumurti, Department of Aquaculture, Faculty of Fisheries and Marine, Universitas Airlangga, Surabaya, Indonesia; Fitri Budiyanto, Research Center for Oceanography, Indonesian Institute of Sciences, Jakarta, Indonesia; Marine Chemistry, King Abdulaziz University, Jeddah, Kingdom of Saudi Arabia; Boedi Setya Rahardja, Putri Desi Wulan Sari, Department of Aquaculture, Faculty of Fisheries and Marine, Universitas Airlangga, Surabaya, Indonesia

Corresponding author Putri Desi Wulan Sari, putri.dw@fpk.unair.ac.id

1. Introduction

Coral reefs are one of Indonesia's marine assets. The area covers 2.5 million hectares in Indonesia's water, representing 14% of the world's coral reefs [1]. It is a distinguished marine area designated by a high level of biodiversity, with more than 480 types of stony corals identified [2]. The existence of the coral reef denotes many benefits, a habitat for living and a nursery for marine animals [3]. Coral reefs are also useful in preventing erosion due to waves and wind forces [4]. One of the many coral reefs found in Indonesia is *Acropora*.

Acropora is the most diverse coral reef genus, with 114 species recognized worldwide and 91 species identified in the Indonesian archipelago [5]. *Acropora* spread from the red sea through the Indo-Pacific Ocean to the Caribbean [6]. Among shallow coastal zone in Indonesia, Gili Ketapang, Probolinggo is well-known for its diversity of coral reefs, especially genus *Acropora* [7]. The waters are portrayed with high frequency, sandy, and bright water suitable for *Acropora* to grow well [8]. Unfortunately, *Acropora*'s condition there is starting to break down.

Previous research in 2019 stated that the coral reefs had begun to deteriorate, and the number of fish had continued to decrease [9]. That is due to overfishing activities and the use of non-environmentally friendly fishing gear in Probolinggo [10]. *Acropora* is a coral reef sensitive to pollution, sedimentation, and fishing due to human activities [8]. The recovery by nature takes time, and the initial stage of coral's self-planting may be interrupted by an unexpected event. Thus, human intervention is required to keep the progress in check, and transplantation is preferable activity introduced in a coral rehabilitation program.

Transplantation is a coral reef rehabilitation technique by planting coral reefs in growing media [11]. Coral reef transplantation is useful in enhancing coral reef populations, mitigating damaged areas, and protecting beaches from waves. This technique has been successfully carried out on *Acropora* coral reefs [12] [13]. In the *Acropora* transplant activity, depth determination is very important. The difference in depth greatly affects the growth of *Acropora* [14]. The corals would be easily destroyed by waves whenever it transplants at low depth [15]. Opposite, going down in-depth, the coral growth is hampered due to the lack of light for the growth of zooxanthella on the coral [16]. Zooxanthella requires sufficient sunlight for photosynthesis to produce calcium carbonate, which affects coral growth [17]. This study is aimed to determine the effect of depth on the *Acropora* transplantation activity. Thus it can become a reference in the *Acropora* rehabilitation program in the Gili Ketapang, Probolinggo.

2. Methods/Materials

2.1. Sampling Site

This research was conducted within 2 months (February - April 2020), and the observation was carried out every 1 week in the waters of Sumberasih District, Gili Ketapang Island, Probolinggo, East Java, Indonesia. Geographically, the research was located at the coordinates of latitude: 07°40'46.7" South and Longitude: 113°15'72.7' East. The location was selected due to massive human activities exploiting the area, such as overfishing and non-environmentally friendly fishing gear. The activities are starting to damage the coral reef ecosystem [7], [10], [18].

2.2. Transplantation Activity

This study used 2 treatments, including P1 and P2, based on the proposed depths. In P1 treatment, *Acropora* was planted at a depth of 5 meters; meanwhile, P2 treatment planted *Acropora* at 10 m in depth. The depth was elected based on the probability of survival rate of zooxanthellae lived as mutualistic symbiosis on the coral [2]. Ensuring the reproducibility of the data, we applied 6 replications for each treatment. The transplantation utilized artificial reefs as a medium for growth [19]. The material for the artificial reef was made of concrete blocks for its low-cost, flexible, easy to be shaped, easy to carry, good resistance, and suitable for living microorganisms [1], [20], [21]. The artificial reef designed to have a compact structure, rectangular in shape, 120 cm long of a leg beam structure, 40 cm high, 10 cm thick, and the table beam structure size was 120 cm long, 50 cm wide, and 10 cm thick. The picture of the transplant rack used showed in Fig. 1.

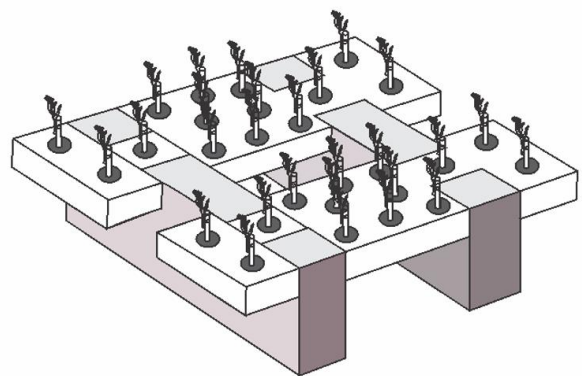


Fig.1 Artificial reef for *Acropora* transplantation activity

The coral fragments used in this study were coral fragments of the *Acropora* species with branching growth from Sumberasih District, Gili Ketapang Island, Probolinggo, East Java, Indonesia. Coral fragments were harvested by cutting coral fragments from the colony, measuring their initial height and width before transplanting, and attaching them to artificial reefs

following previous studies [22]. An artificial reef consisted of 28 *Acropora* fragments, as showed in Figure 1. Following that, the concrete table was slowly submerged at a depth of 5 m and 10 m.

The data retrieved from this study were survival rate, zooxanthella, and water quality. The coral survival rate in this study was carried out once a week for 2 months. Survival of the coral *Acropora* observed and calculated according to the previous research as the following formula [23]:

$$\text{Survival rate} = Nt/No \times 100\% \quad (1)$$

Nt represents the number of living coral fragments at the end of the study. No is the number of living coral fragments at the beginning of the study. Meanwhile, the zooxanthellae density was searched and calculated using a modification of the previous research formula [24]:

$$\text{Zooxanthellae density (Cell/cm}^2\text{)} = N \times At \times Vt / Ac \times Cs \times As \quad (2)$$

N display counted the number of zooxanthellae (cell), At represents glass cover area (mm^2), Vt is total sample volume (ml), meanwhile Ac , Vs , As are the area of the scraped sample (cm^2), sample volume used (ml), hemacytometer area (mm^2), respectively.

2.3. Water Quality Measurement

Supporting the survival of the *Acropora* experiment, the physicochemical parameters of seawater were also monitored, as presented in Table 1. Those parameters are suspected to affect the survival capability of zooxanthellae on the *Acropora* directly.

Table 1 Measured environmental parameters and tools used [25], [26], [27]

Parameter	Device
Temperature ($^{\circ}\text{C}$)	Thermometer
Flow velocity (m/s)	Flowball and stopwatch
Brightness (%)	Sacchi disk
Nitrate (NO_3^-) (mg/l)	Spectrophotometer
Phosphate (PO_4) (mg/l)	Spectrophotometer
pH	pH paper
Salinity ($^{\circ}/_{\text{00}}$)	Refractometer

3. Results and Discussion

The experiment on the survival rate of *Acropora* was carried out within two months in response to the persistence and adaptability of the fragments. Within the proposed time, the *Acropora* drifts off between two conditions either it successfully grows or death. The measurement and observation to differentiate the living and the dead *Acropora* were also obvious. The initial fragments of *Acropora* introduced in the artificial reef were the same in number, *Viz.* 168 fragments to standardize the experiment. Within two (2) months of the experiment, the dead of *Acropora* at depth 10 m (48 fragments) was three times that at 5 m (12 fragments). This mortality designated the different survival rates. The data of transplanted *Acropora* at 5 m and 10 m depths showed significant differences in survival rates ($p < 0.01$). The highest survival rate (94%) was at a depth of 5 m, while the lowest (84%) was at a depth of 10 m (Table 2).

Table 2 *Acropora* survival rate data at depths of 5 m and 10 m

Depth	Total live coral	Average live coral	Total dead coral	Average dead coral	Survival Rate (%)
5 m (P1)	156	26	12	2	94 ^a
10 m (P2)	120	20	48	8	84 ^b

Note: Different superscript letters in the same column showed a very significant difference ($p < 0.01$)

The detail of survived *Acropora* was also monitored weekly. The observation provided conspicuous even in the field as the function of time. Both treatments assigned different adaptability and durability of *Acropora* to live in different depths. The data showed the depth contributed a negative effect to the *Acropora*. The survival of *Acropora* was higher in shallower waters. Both experiments, 5 m depth P1 and 10 m depth P2, were started with 168 fragments of *Acropora*. The survived *Acropora* was slightly down at depth 5 m (P1) weekly. Up to week 3, the number of survived *Acropora* was reduced to 164 fragments, and 4 fragments were dead.

Interestingly, it maintained the number of survived *Acropora* till week 5 (164 fragments). In the following weeks, the survived *Acropora* lessen at 2-3 fragments. In the 8th week, the survived *Acropora* were 156 fragments. Meanwhile, at depth 10 m, the number of survived *Acropora* was cut down progressively. In the

3rd week, the number of survived *Acropora* decreased to 155 fragments; 13 fragments were dead. As the following week, the dead fragment fell to the number of 5-12. At the end of the experiment, the survived *Acropora* at 10 m in depth was 120 fragments. Complete data showed in Figure 2.

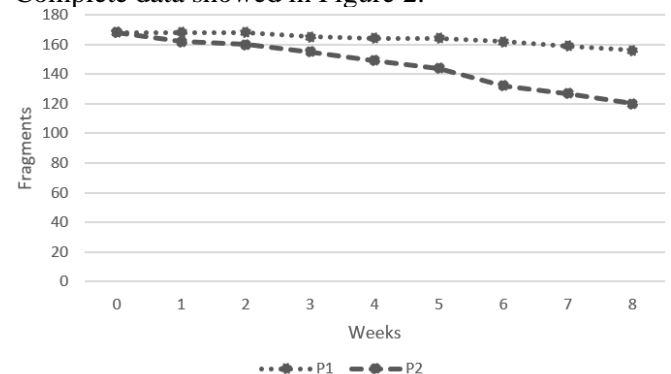


Fig. 2 Weekly coral survival rate data

The field observations showed that live *Acropora* was characterized by bright and diverse colors, opposite the dead corals were characterized by pale



Fig. 3 Living *Acropora* sp. (a), dead *Acropora* (b)

Table 3 present the zooxanthellae density data. Statistically, there was a significant difference in zooxanthellae density between the depth of 5 meters and 10 meters ($p < 0.01$). The average density of zooxanthellae cells at a depth of 5 meters was 4.79×10^6 cells / cm^2 and at a depth of 10 meters was 2.75×10^6 cells/ cm^2 .

Table 3 Data on zooxanthellae cell density (cells/ cm^2)

Depth (m)	Zooxanthellae Density (cell/ cm^2)
5 (P1)	4799298 ± 734920^a
10 (P2)	2759921 ± 631981^b

Note: Different superscript letters in the same column showed a very significant difference ($p < 0.01$)

Water quality measurements were carried out every week in the waters of Gili Ketapang Island. Based on observations of water conditions, water parameters did not comply with quality standards, namely nitrate and phosphate levels. However, in general, the condition of Gili Ketapang waters was in good condition and supported *Acropora*.

Table 4 Water quality measurement at a depth of 5 m and 10 m

Parameter	Depth 5 m (P1)	Depth 10 m (P2)	Standard
Brightness (%)	6	4	>3 [28]
Flow velocity (m/s)	0.1	0.3	0.15-0.23 [30]
Salinity (‰)	30	30	33-34 [29]
Temperature (°C)	31	31	18-36 [29]
pH	7	7	6-9 [28]
Nitrate (mg/l)	0.6	2	0.01-0.5 [31]
Phosphate (mg/l)	0.1	0.1	0.015 [31]

Many factors influence the survival rate of *Acropora*, and one of the most important factors is received light intensity. Sunlight penetration into seawater is a negative function of depth. Shallower waters grant a higher possibility of sunlight penetrating its bottom. Corals that grew at lower depths received more sunlight and had better survival [15], [32]. Light is an important aspect of common coral survival because zooxanthella's growth depends on sunlight [33]. Zooxanthella, a mutualistic symbiosis organism

white and fragile. Figure 3 shows the difference between living and dead coral fragments.

on corals, relies upon sunlight for photosynthesis in its chloroplasts [34]. The mutualistic mechanism is well-studied; 80% of zooxanthella photosynthetic products such as carbohydrates and oxygen were transferred to corals [35]. Thus, coral as the host depends on this transferred photosynthetic product to maintain its life. The success of zooxanthella in producing its photosynthetic product determines the survival of coral. Therefore, the shallower waters with higher sunlight intensity provide vital energy for coral to live.

The field observations showed that live *Acropora* was characterized by bright and diverse colors, opposite the dead corals were characterized by pale white and fragile. Figure 4 shows the difference between living and dead coral fragments. According to previous research, the living *Acropora* would be bright while the dead were pale [36], [37]. The bleaching phenomenon caused the death of *Acropora*. Coral bleaching, the release of zooxanthella from corals, was marked by the fading of the whole coral color to white [38]. Many environmental factors stimulate the bleaching phenomenon, such as increased temperature, light, and sediment [39].

The average density of zooxanthellae cells at a depth of 5 meters was 4.79×10^6 cells / cm^2 and at a depth of 10 meters was 2.75×10^6 cells/ cm^2 . That indicated that the number of zooxanthellae in the corals of *Acropora* sp. in the study area decreased with increasing depth. The zooxanthellae density at a depth of 5 meters was higher than at a depth of 10 meters. The ability of light intensity to penetrate is different between the two depths. The level of brightness depicted this crucial factor. Brightness affects the light intensity that enters the water [16]. The brightness level at a depth of 5 meters was higher than at a depth of 10 meters. If the water deeper, the value of brightness became less. This light intensity played a role in the photosynthesis process in zooxanthellae [40]. Zooxanthellae lived in animal tissue cells of corals in the form of cysts. Zooxanthellae utilize carbon dioxide produced from corals during respiration, and as a

return, coral gets nutrients and oxygen from the photosynthesis process [34]. Whenever the light intensity was low, the capability of zooxanthellae to produce oxygen and nutrients was limited. The transfer of those precious supporting live components to coral was then stranded lead to the death of coral. Hence, when the corals die, the zooxanthellae could not contain enough carbon dioxide to carry out photosynthesis; thus, their numbers are reduced. Previous research study stated that the highest density of zooxanthellae in the coral reef zone was at a depth of 2-5 m with an average density of approximately 7.7×10^6 cells/cm², and the lowest density was at 5-10 m with an average of approximately 3.2×10^6 cells/cm² [41].

Water quality measurements were carried out every week in the waters of Gili Ketapang Island. Based on observations of water conditions, water parameters did not comply with quality standards, namely nitrate and phosphate levels. However, in general, the condition of Gili Ketapang waters was in good condition and supported *Acropora*.

The transplant method had been widely used for the rehabilitation of *Acropora* [42]. However, no journals report coral conservation in Gili Ketapang, Probolinggo, even though the corals' condition had been damaged [9]. The new novelty obtained from this research was the reported first attempt to improve environmental sustainability in Gili Ketapang, Probolinggo. In applying transplants with this technique, water depth and quality were considered, especially the brightness, because it affected photosynthetic activity and zooxanthellae.

4. Conclusion

This study indicated that transplanted activity of *Acropora* at 5 m showed better results in survival rate and zooxanthellae density than at 10 m. The highest survival rate at a depth of 5 m was 94%, while the lowest was at a depth of 10 m with 84%. The average density of zooxanthellae cells at a depth of 5 meters was 4.79×10^6 cells / cm² and at a depth of 10 meters was 2.75×10^6 cells/cm². Based on observations of water conditions, water parameters did not comply with quality standards, namely nitrate and phosphate levels. From this study, we recommended that transplantation activity of *Acropora* in Gili Ketapang, Probolinggo, was performed at a depth of 5 m for optimal results.

Acknowledgment

This study was supported by the Faculty of Fisheries and Marine, Universitas Airlangga. We want to express our gratitude to the people in Gili Ketapang, Probolinggo, Research Center of Oceanography, and King Abdulaziz University for their support.

References

- [1] IRAWAN H., YUDE R., SUHANA M. P., SURYANTI A., KURNIAWAN D., ZAHRA A., PUTRA R. D., RAZAI T. S., YUNianto A. H., and SYAKTI A. D. Assembled Concrete Reefs as a Stand for Coral Transplantation on the Seabed. *Institute Of Physics Conference Series: Earth and Environmental Science*, 2019, 348: 1-7. <https://doi.org/10.1088/1755-1315/348/1/012046>
- [2] BURKE L., SELIG E., and SPALDING M. *Reef of Risk in South East Asia*. World Resources Institute, Washington DC, USA. 2002.
- [3] FLOROS C., & SCHLEYER M. H. The Functional Importance of *Acropora Austera* as Nursery Areas for Juvenile Reef Fish on South African Coral Reefs. *Coral Reefs*, 2017, 36: 139-149. <https://doi.org/10.1007/s00338-016-1499-8>
- [4] HARRIS D. L., ROVERE A., CASELLA E., POWER H., CANAVESIO R., COLLIN A., POMEROY A., WEBSTER J. M. and PARRAVICINI V. Coral Reef Structural Complexity Provides Important Coastal Protection from Waves under Rising Sea Levels. *Science Advances*, 2018, 4: 1-7. <https://doi.org/10.1126/sciadv.aao4350>
- [5] WALLACE C., RICHARDS C., and SUHARSONO Z. Regional Distribution Patterns of *Acropora* and their Use in the Conservation of Coral Reefs in Indonesia. *Journal of Coastal and Marine Resources*, 2001, 4: 40-53. <https://publications.australian.museum/regional-distribution-patterns-of-acropora-in-indonesia-and-their-use-in-conservation/>
- [6] SHINZATO C., KHALTURIN K., INOUE J., ZAYASU Y., KANDA M., KAWAMITSU M., YOSHIOKA Y., YAMASHITA H., SUZUKI G., and SATOH N. Eighteen Coral Genomes Reveal the Evolutionary Origin of *Acropora* Strategies to Accommodate Environmental Changes. *Molecular Biology and Evolution*, 2020, 38: 16-30. <https://doi.org/10.1093/molbev/msaa216>
- [7] KRISNAWATI S., & HIDAYAH Z. Mapping the Coral Reefs of Gili Ketapang Island, Probolinggo. *Jurnal Ilmiah Kelautan dan Perikanan*, 2020, 1: 437-450. <https://doi.org/10.21107/juvenil.v1i4.8933>
- [8] PUSPITASARI L., SAMINO S., and RETNANINGDYAH C. Alteration of Coral Reef Community Structure Caused by Anthropogenic Activity in Coastal Area of Giliketapang Island, Probolinggo, East Java, Indonesia. *Journal of Tropical Life Science*, 2013, 3: 23-27. <https://jtrolis.ub.ac.id/index.php/jtrolis/article/view/67/95>
- [9] ANGGA D., SUKIDIN S., SUHARSO P., ANGGA D., SUKIDIN S., and SUHARSO P. Changes in the Socio-Economic Conditions of the People of Gili Ketapang Island, Sumberasih Island, Probolinggo Regency as a Result of the Existence of Snorkeling Tourism Objects. *Jurnal Pendidikan Ekonomi*, 2019, 13: 36-41. <https://doi.org/10.19184/jpe.v13i1.10418>
- [10] ISRONI W., SAMARA S. H., and SANTANUMURTI M. B. Application of Artificial Reefs for Fisheries Enhancement in Probolinggo, Indonesia. *Biodiversitas Journal of Biological Diversity*, 2019, 20: 2273-2278. <https://doi.org/10.13057/biodiv/d200823>
- [11] ULFAH I., YUSUF S., RAPPE R. A., BAHAR A., HARIS A., TRESNATI J., and TUWO A. Coral Conditions and Reef Fish Presence in the Coral Transplantation Area on Kapposang Island, Pangkep Regency, South Sulawesi. *Institute of Physics Conference Series: Earth and Environmental Science*, 2020, 473: 1-10. <https://doi.org/10.1088/1755-1315/473/1/012058>

- [12] NITHYANANDAN M., LE VAY L., RAJA D. K., KESAVAN R., and PEREIRA D. Coral Nursery and Transplantation of the Staghorn Coral, *Acropora Downingi* in Sabah Al-Ahmad Sea City, Kuwait, Arabian Gulf. *Cogent Environmental Science*, 2018, 4: 1-15. <https://doi.org/10.1080/23311843.2018.1480334>
- [13] LIGSON C. A., TABALANZA T. D., VILLANUEVA R. D., and CABAITAN P. C. Feasibility of Early Outplanting of Sexually Propagated *Acropora Verweyi* for Coral Reef Restoration Demonstrated in the Philippines. *Restoration Ecology*, 2020, 28: 244-251. <https://doi.org/10.1111/rec.13054>
- [14] SMALLHORN-WEST P. F., BRIDGE T. C., MUNDAY P. L., and JONES G. P. Depth Distribution and Abundance of a Coral-Associated Reef Fish: Roles of Recruitment and Post-Recruitment Processes. *Coral Reefs*, 2017, 36: 157-166. <https://doi.org/10.1007/s00338-016-1509-x>
- [15] SOONG K., & CHEN T. A. Coral Transplantation: Regeneration and Growth of *Acropora* Fragments in a Nursery. *Restoration Ecology*, 2003, 11: 62-71. <https://doi.org/10.1046/j.1526-100X.2003.00100.x>
- [16] SHICK J. M., LESSER M. P., DUNLAP W. C., STOCHAJ W. R., CHALKER B. E., and WON J. W. Depth-Dependent Responses to Solar Ultraviolet Radiation and Oxidative Stress in the Zooxanthellate Coral *Acropora Microphthalma*. *Marine Biology*, 1995, 122: 41-51. <https://doi.org/10.1007/BF00349276>
- [17] MULYANI S., TUWO A., SYAMSUDDIN R., and JOMPA J. Effect of Seaweed *Kappaphycus Alvarezii* Aquaculture on Growth and Survival of Coral *Acropora Muricata*. *Aquaculture, Aquarium, Conservation & Legislation*, 2018, 11: 1792-1798. <http://www.bioflux.com.ro/docs/2018.1792-1798.pdf>
- [18] HIDAYAH Z., and NUZULA N. I. Mapping the Coral Reefs of Gili Ketapang Island, Probolinggo. *Jurnal Kelautan Tropis*, 2019, 22: 127-134. <https://doi.org/10.14710/jkt.v22i2.5634>
- [19] ZAKARIA I. J., & ANNISA H. Succession of Reef Fish Community at the Coral Area Rehabilitated with Coral Transplantation and Artificial Reef in West Sumatra, Indonesia. *Aquaculture, Aquarium, Conservation & Legislation*, 2020, 13: 1934-1945. <http://www.bioflux.com.ro/docs/2020.1934-1945.pdf>
- [20] YANG Y., JI T., LIN X., CHEN C., and YANG Z. Biogenic Sulfuric Acid Corrosion Resistance of New Artificial Reef Concrete. *Construction and Building Materials*, 2018, 158: 33-41. <https://doi.org/10.1016/j.conbuildmat.2017.10.007>
- [21] XU Q., JI T., YANG Z., and YE Y. Preliminary Investigation of Artificial Reef Concrete with Sulphoaluminate Cement, Marine Sand and Sea Water. *Construction and Building Materials*, 2019, 211: 837-846. <https://doi.org/10.1016/j.conbuildmat.2019.03.272>
- [22] MUZAKI F. K., SAPTARINI D., AZIZAH I. R., SARI I. K., and PRAMONO A. T. E. Survival and Growth of *Acropora Millepora* Coral Fragments Transplanted in Turbid Water of Sepulu, Bangkalan–Madura. *Ecology, Environment & Conservation Paper*, 2020, 26: 26-31. <http://www.envirobiotechjournals.com/EEC/v26JuneSuppl2020/EEC-5.pdf>
- [23] SIAHAINENIA L., TUHUMURY S. F., UNEPUTTY P. A., TUHUMURY N. C. Survival and Growth of Transplanted Coral Reef in Lagoon Ecosystem of Ihamahu, Central Maluku, Indonesia. *Institute of Physics Conference Series: Earth and Environmental Science*, 2019, 339: 1-5. <https://doi.org/10.1088/1755-1315/339/1/012003>
- [24] LIENG L., EFRIYELDI, and THAMRIN. Density Zooxanthella Based on the Life Form of Coral on Marak Island West Sumatera Province. *Asian Journal of Aquatic Sciences*, 2020, 3: 209-216. <https://doi.org/10.31258/ajoas.3.3.209-216>
- [25] TARAGUSTI A. S., SANTANUMURTI M. B., RAHARDJA B. S., and PRAYOGO. Effectiveness of Nitrobacter on the Specific Growth Rate, Survival Rate and Feed Conversion Ratio of Dumbo Catfish *Clarias* Sp. with Density Differences in the Aquaponic System. *Institute of Physics Conference Series: Earth and Environmental Science*, 2019, 236: 1-6. <https://doi.org/10.1088/1755-1315/236/1/012088>
- [26] SANTANUMURTI M. B., HANIFAH S., and NINDARWI D. D. Water Quality in The North Madura: Is It Suitable for Vannamei Shrimp Farming or Not? *Jurnal Ilmu Perikanan dan Sumberdaya Perairan*, 2019, 8: 753-758. <http://dx.doi.org/10.23960/aqs.v8i1.p753-758>
- [27] MOUSAVI-MOAYEID F., CHERAGHI M., and LORESTANI B. Investigation of the Amount of Phosphate and Nitrate Accumulation in Consumable Onion in Hamedan City. *Journal of Neyshabur University of Medical Sciences*, 2017, 4: 82-89. <https://www.sid.ir/en/journal/ViewPaper.aspx?ID=581424>
- [28] ARYANTO N. C., & PERMANAWATI Y. Types and Distribution of Coral Reef on the Karimata Coast, West Kalimantan. *Bulletin of the Marine Geology*, 2016, 24: 25-35. <http://dx.doi.org/10.32693/bomg.24.1.2009.12>
- [29] OMPI B. N., REMBET U. N., and RONDONUWU A. B. Coral Reef Conditions of Hogow and Dakokayu Islands Southeast Minahasa Regency. *Jurnal Ilmiah Platax*, 2019, 7(1): 186-192. <https://doi.org/10.35800/jip.7.1.2019.22743>
- [30] PANGARIBUAN T. H., SOEDARSONO P., and AIN C. The Relationship between Nitrate and Phosphate Content with Zooxanthellae Density in Coral Polyps of *Acropora* Sp. in the Waters of the Coral Reefs of Menjangan Kecil Island, Karimun Jawa. *Management of Aquatic Resources Journal*, 2013, 2: 136-145. <https://doi.org/10.14710/marj.v2i4.4277>
- [31] SOUHOKA J., and PATTY S. Monitoring of Hydrological Conditions in Relation to the Condition of Coral Reefs in the Waters of Talise Island, North Sulawesi. *Jurnal Ilmiah Platax*, 2013, 1: 138-147. <https://doi.org/10.35800/jip.1.3.2013.2579> (In Indonesian)
- [32] KAHNG S. E., AKKAYNAK D., SHLESINGER T., HOCHBERG E. J., WIEDENMANN J., TAMIR R., and TCHERNOV D. Light, Temperature, Photosynthesis, Heterotrophy, and the Lower Depth Limits of Mesophotic Coral Ecosystems. *Mesophotic Coral Ecosystems*, 2019, 42: 801-828. https://doi.org/10.1007/978-3-319-92735-0_42
- [33] KUANUI P., CHAVANICH S., VIYAKARN V., OMORI M., FUJITA T., and LIN C. Effect of Light Intensity on Survival and Photosynthetic Efficiency of Cultured Corals of Different Ages. *Estuarine, Coastal and Shelf Science*, 2020, 235: 1-6. <https://doi.org/10.1016/j.ecss.2019.106515>

- [34] TITLYANOV E. A., & TITLYANOVA T. V. Symbiotic Relationships between Microalgal Zooxanthellae and Reef-Building Coral Polyps in the Process of Autotrophic and Heterotrophic Nutrition. *Russian Journal of Marine Biology*, 2020, 46: 307-318. <https://doi.org/10.1134/S1063074020050107>
- [35] KUANUI P., CHAVANICH S., VIYAKARN V., OMORI M., and LIN C. Effects of Temperature and Salinity on Survival Rate of Cultured Corals and Photosynthetic Efficiency of Zooxanthellae in Coral Tissues. *Ocean Science Journal*, 2015, 50: 263-268. <https://doi.org/10.1007/s12601-015-0023-3>
- [36] AGUSTINA E., MARDIANSYAH M. A., DOUDI M., and ANNAS S. Characteristics of Coral Species in Rinon Pulo Breuh Waters. *Prosiding Seminar Nasional Biotik*, 2016, 3: 43-48. <https://jurnal.ar-raniry.ac.id/index.php/PBiotik/article/view/2529/1795>
- [37] SAKAI K., SINGH T., and IGUCHI A. Bleaching and Post-Bleaching Mortality of Acropora Corals on a Heat-Susceptible Reef in 2016. *Peer Journal Life & Environment*, 2019, 7: 1-20. <https://doi.org/10.7717/peerj.8138>
- [38] VINKA O. S., & FEBRIANI R. Resort Wear Design with Coral Bleaching Motifs and Business Opportunities in the Fashion Industry. *eProceedings of Art & Design*, 2019, 6(2): 2276-2287. <https://core.ac.uk/reader/299932970>
- [39] ANTHONY K. R., CONNOLLY S. R., and HOEGH-GULDBERG O. Bleaching, energetics, and coral mortality risk: Effects of temperature, light, and sediment regime. *Limnology and Oceanography*, 2007, 52, 716-726. <https://doi.org/10.4319/lo.2007.52.2.0716>
- [40] BAIRD M. E., MONGIN M., RIZWI F., BAY L. K., CANTIN N. E., SOJA-WOŹNIAK M., and SKERRATT J. A Mechanistic Model of Coral Bleaching Due to Temperature-Mediated Light-Driven Reactive Oxygen Build-Up in Zooxanthellae. *Ecological Modelling*, 2018, 386: 20-37. <https://doi.org/10.1016/j.ecolmodel.2018.07.013>
- [41] SALIM R. A., & PALUPI R. D. Density of Foliose Coral Zooxanthellae at Different Depths (Coral Reef Zone) in Waworaha Waters, Soropia District. *Jurnal Sapa Laut*, 2020, 5: 139-144. <http://dx.doi.org/10.33772/jsl.v5i2.12168>
- [42] GULAYAN S. J. Coral Transplantation Technology for Sustainable Fisheries and Underwater Tourism. *International Journal of Environmental and Rural Development*, 2017, 8: 63-69. <http://iserd.net/ijerd81/Volume8-1-10.pdf>

参考文献:

- [1] IRAWAN H., YUDE R., SUHANA M. P., SURYANTI A., KURNIAWAN D., ZAHRA A., PUTRA R. D., RAZAI T. S., YUNianto A. H., 和 SYAKTI A. D. 组装混凝土珊瑚礁作为海底珊瑚移植的支架。物理研究所会议系列：地球与环境科学，2019，348：1-7. <https://doi.org/10.1088/1755-1315/348/1/012046>
- [2] BURKE L., SELIG E., 和 SPALDING M. 东南亚的风险礁。世界资源研究所，华盛顿特区，美国。2002.
- [3] FLOROS C., 和 SCHLEYER M. H. 鹿角作为南非珊瑚礁上幼鱼的育苗区的功能重要性。珊瑚礁，2017，36：139-149. <https://doi.org/10.1007/s00338-016-1499-8>
- [4] HARRIS D. L., ROVERE A., CASELLA E., POWER H., CANAVESIO R., COLLIN A., POMEROY A., WEBSTER J. M. 和 PARRAVICINI V.

- 珊瑚礁结构的复杂性为海平面上升下的海浪提供了重要的海岸保护。科学进展，2018，4：1-7. <https://doi.org/10.1126/sciadv.aao4350>
- [5] WALLACE C., RICHARDS C., 和 SUHARSONO Z. 鹿角的区域分布模式及其在印度尼西亚珊瑚礁保护中的用途。沿海和海洋资源杂志，2001，4：40-53. <https://publications.australian.museum/regional-distribution-patterns-of-acropora-in-indonesia-and-their-use-in-conservation/>
- [6] SHINZATO C., KHALTURIN K., INOUE J., ZAYASU Y., KANDA M., KAWAMITSU M., YOSHIOKA Y., YAMASHITA H., SUZUKI G., 和 SATOH N. 十八个珊瑚基因组揭示了鹿角珊瑚适应环境变化策略的进化起源。分子生物学与进化，2020，38：16-30. <https://doi.org/10.1093/molbev/msaa216>
- [7] KRISNAWATI S., 和 HIDAYAH Z. 绘制探戈吉利吉打邦岛的珊瑚礁图。海洋和渔业科学杂志，2020，1：437-450. <https://doi.org/10.21107/juvenil.v1i4.8933>
- [8] PUSPITASARI L., SAMINO S., 和 RETNANINGDYAH C. 印度尼西亚东爪哇探戈吉利塔邦岛沿海地区人为活动引起的珊瑚礁群落结构改变。热带生命科学杂志，2013，3：23-27. <https://jtrolis.ub.ac.id/index.php/jtrolis/article/view/67/95>
- [9] ANGGA D., SUKIDIN S., SUHARSO P., ANGGA D., SUKIDIN S., 和 SUHARSO P. 由于浮潜旅游对象的存在，吉利吉打邦岛、来源岛、探戈摄政居民的社会经济状况发生了变化。经济教育杂志，2019 13: 36-41. <https://doi.org/10.19184/jpe.v13i1.10418>
- [10] ISRONI W., SAMARA S. H., 和 SANTANUMURTI M. B. 人工鱼礁在印度尼西亚探戈渔业增强中的应用。生物多样性生物多样性杂志，2019，20：2273-2278. <https://doi.org/10.13057/biodiv/d200823>
- [11] ULFAH I., YUSUF S., RAPPE R. A., BAHAR A., HARIS A., TRESNATI J., 和 TUWO A. 南苏拉威西省邦凯普摄政区卡波桑岛珊瑚移植区的珊瑚状况和珊瑚礁鱼类。物理研究所会议系列：地球与环境科学，2020，473：1-10. <https://doi.org/10.1088/1755-1315/473/1/012058>
- [12] NITHYANANDAN M., LE VAY L., RAJA D. K., KESAVAN R., 和 PEREIRA D. 珊瑚苗圃和鹿角珊瑚的移植，唐宁鹿角在沙巴艾哈迈德海城，科威特，阿拉伯湾。有说服力的环境科学，2018，4：1-15. <https://doi.org/10.1080/23311843.2018.1480334>
- [13] LIGSON C. A., TABALANZA T. D., VILLANUEVA R. D., 和 CABAITAN P. C. 在菲律宾展示的珊瑚礁修复中早期外植有性繁殖鹿角鹿角的可行性。恢复生态，2020，28：244-251. <https://doi.org/10.1111/rec.13054>
- [14] SMALLHORN-WEST P. F., BRIDGE T. C., MUNDAY P. L., 和 JONES G. P. 珊瑚礁鱼的深度分布和丰度：招募和招募后过程的作用。珊瑚礁，2017，36：157-166. <https://doi.org/10.1007/s00338-016-1509-x>
- [15] SOONG K., 和 CHEN T. A. 珊瑚移植：苗圃中鹿角珊瑚碎片的再生和生长。恢复生态，2003，11：62-71. <https://doi.org/10.1046/j.1526-100X.2003.00100.x>

- [16] SHICK J. M., LESSER M. P., DUNLAP W. C., STOCHAJ W. R., CHALKER B. E., 和 WON J. W. 虫黄藻珊瑚鹿角小眼对太阳紫外线辐射和氧化应激的深度依赖反应。海洋生物学, 1995, 122: 41-51. <https://doi.org/10.1007/BF00349276>
- [17] MULYANI S., TUWO A., SYAMSUDDIN R., 和 JOMPA J. 海藻卡帕藻水产养殖对珊瑚鹿角珊瑚生长和存活的影响。水产养殖、水族馆、保护和立法. 2018, 11: 1792-1798. <http://www.bioflux.com.ro/docs/2018.1792-1798.pdf>
- [18] HIDAYAH Z., 和 NUZULA N. I. 绘制吉利打邦岛的珊瑚礁图, 问题。热带海洋杂志, 2019, 22: 127-134. <https://doi.org/10.14710/jkt.v22i2.5634>
- [19] ZAKARIA I. J., 和 ANNISA H. 在印度尼西亚苏门答腊通过珊瑚移植和人工珊瑚礁恢复的珊瑚区的珊瑚礁鱼类群落的继承。水产养殖、水族馆、保护和立法, 2020, 13: 1934-1945. <http://www.bioflux.com.ro/docs/2020.1934-1945.pdf>
- [20] YANG Y., JI T., LIN X., CHEN C., 和 YANG Z. 新型人工珊瑚礁混凝土的生物硫酸腐蚀性能。建筑和建筑材料, 2018, 158: 33-41. <https://doi.org/10.1016/j.conbuildmat.2017.10.007>
- [21] XU Q., JI T., YANG Z., 和 YE Y. 硫酸盐水泥、海砂和海水人工珊瑚礁混凝土的初步研究。建筑和建筑材料, 2019, 211: 837-846. <https://doi.org/10.1016/j.conbuildmat.2019.03.272>
- [22] MUZAKI F. K., SAPTARINI D., AZIZAH I. R., SARI I. K., 和 PRAMONO A. T. E. 移植到邦卡兰-马杜拉十浑浊水中的鹿角珊瑚碎片的存活和生长。生态、环境与保育论文, 2020, 26: 26-31. <http://www.envirobiotechjournals.com/EEC/v26JuneSuppl2020/EEC-5.pdf>
- [23] SIAHAINENIA L., TUHUMURY S. F., UNEPUTTY P. A., 和 TUHUMURY N. C. 印度尼西亚中马鲁古伊哈马湖泻湖生态系统中移植珊瑚礁的生存和生长。物理研究所会议系列: 地球与环境科学, 2019, 339: 1-5. <https://doi.org/10.1088/1755-1315/339/1/012003>
- [24] LIENG L., EFRIYELDI, 和 THAMRIN. 基于马拉克岛苏门答腊省珊瑚生命形式的密度虫黄藻。亚洲水产科学杂志, 2020, 3: 209-216. <https://doi.org/10.31258/ajoaas.3.3.209-216>
- [25] TARAGUSTI A. S., SANTANUMURTI M. B., RAHARDJA B. S., 和 PRAYOGO. 硝化细菌对小飞鲷克拉里亚斯比生长率、成活率和饲料转化率的影响。鱼菜系统中的密度差异。物理研究所会议系列: 地球与环境科学, 2019, 236: 1-6. <https://doi.org/10.1088/1755-1315/236/1/012088>
- [26] SANTANUMURTI M. B., HANIFAH S., 和 NINDARWI D. 北马都拉的水质: 是否适合南美对虾养殖? 渔业科学与水产资源杂志, 2019, 8: 753-758. <http://dx.doi.org/10.23960/aqs.v8i1.p753-758>
- [27] MOUSAVI-MOAYEID F., CHERAGHI M., 和 LORESTANI B. 哈马丹市食用洋葱中磷酸盐和硝酸盐积累量的调查。内沙布尔医科大学学报, 2017, 4: 82-89. <https://www.sid.ir/en/journal/ViewPaper.aspx?ID=581424>
- [28] ARYANTO N. C., 和 PERMANAWATI Y. 西加里曼丹卡里马塔海岸珊瑚礁的类型和分布。海洋地质公报, 2016, 24: 25-35. <http://dx.doi.org/10.32693/bomg.24.1.2009.12>
- [29] OMPI B. N., REMBET U. N., 和 RONDONUWU A. B. 霍高和达科卡尤群岛东南米纳哈萨摄政区的珊瑚礁状况。普拉塔克斯科学杂志, 2019, 7(1): 186-192. <https://doi.org/10.35800/jip.7.1.2019.22743>
- [30] PANGARIBUAN T. H., SOEDARSONO P., 和 AIN C. 鹿角珊瑚珊瑚虫中硝酸盐和磷酸盐含量与虫黄藻密度的关系。在卡里蒙爪哇小鹿岛的珊瑚礁水域。水产资源管理学报, 2013, 2: 136-145. <https://doi.org/10.14710/marj.v2i4.4277>
- [31] SOUHOKA J., 和 PATTY S. 监测与北苏拉威西岛泰利斯岛水域珊瑚礁状况相关的水文状况。普拉塔克斯科学杂志, 2013, 1: 138-147. <https://doi.org/10.35800/jip.1.3.2013.2579> (In Indonesian)
- [32] KAHNG S. E., AKKAYNAK D., SHLESINGER T., HOCHBERG E. J., WIEDENMANN J., TAMIR R., 和 TCHERNOV D. 中光珊瑚生态系统的光、温度、光合作用、异养和深度下限。中光珊瑚生态系统, 2019, 42: 801-828. https://doi.org/10.1007/978-3-319-92735-0_42
- [33] KUANUI P., CHAVANICH S., VIYAKARN V., OMORI M., FUJITA T., 和 LIN C. 光强对不同年龄养殖珊瑚的生存和光合效率的影响。河口、海岸和陆架科学, 2020, 235: 1-6. <https://doi.org/10.1016/j.ecss.2019.106515>
- [34] TITLYANOV E. A., 和 TITLYANOVA T. V. 自养和异养营养过程中微藻虫黄藻与造礁珊瑚息肉的共生关系。俄罗斯海洋生物学杂志, 2020, 46: 307-318. <https://doi.org/10.1134/S1063074020050107>
- [35] KUANUI P., CHAVANICH S., VIYAKARN V., OMORI M., 和 LIN C. 温度和盐度对珊瑚组织中养殖珊瑚存活率和虫黄藻光合效率的影响。海洋科学杂志, 2015, 50: 263-268. <https://doi.org/10.1007/s12601-015-0023-3>
- [36] AGUSTINA E., MARDIANSYAH M. A., DOUDI M., 和 ANNAS S. 里农-普洛布鲁埃水域珊瑚种类的特征。全国生物研讨会论文集, 2016, 3: 43-48. <https://jurnal.ar-raniry.ac.id/index.php/PBiotik/article/view/2529/1795>
- [37] SAKAI K., SINGH T., 和 IGUCHI A. 2016 年热敏感珊瑚礁上鹿角珊瑚的漂白和漂白后死亡率。同行杂志生活与环境, 2019, 7: 1-20. <https://doi.org/10.7717/peerj.8138>
- [38] VINKA O. S., 和 FEBRIANI R. 带有珊瑚漂白图案的度假服装设计和时尚行业的商机。艺术与电子学报, 2019, 6(2): 2276-2287. <https://core.ac.uk/reader/299932970>
- [39] ANTHONY K. R., CONNOLLY S. R., 和 HOEGH-GULDBERG O. 漂白、能量学和珊瑚死亡风险: 温度、光线和沉积物状

- 况的影响。湖沼学和海洋学, 2007, 52, 716-726.
<https://doi.org/10.4319/lo.2007.52.2.0716>
- [40] BAIRD M. E., MONGIN M., RIZWI F., BAY L. K., CANTIN N. E., SOJA-WOŹNIAK M., 和 SKERRATT J. 由于温度介导的光驱动活性氧在虫黄藻中积聚导致珊瑚漂白的机理模型。生态建模, 2018, 386: 20-37.
<https://doi.org/10.1016/j.ecolmodel.2018.07.013>
- [41] SALIM R. A., 和 PALUPI R. D. 索罗皮亚区瓦沃拉哈水域不同深度(珊瑚礁区)叶状珊瑚虫黄藻的密度。萨帕劳特杂志, 2020, 5: 139-144.
<http://dx.doi.org/10.33772/jsl.v5i2.12168>
- [42] GULAYAN S. J. 可持续渔业和潜水旅游的珊瑚移植技术。国际环境与农村发展杂志, 2017, 8: 63-69.
<http://iserd.net/ijerd81/Volume8-1-10.pdf>